

Engineering Resilient Cities through the Vision of Children Commemorating One Year since Hurricane Sandy

Hosted by The General Society of Mechanics and Tradesmen



Experience firsthand the power of art in response to Hurricane Sandy by students from The Center for Educational Enrichment at Gateway School of Manhattan, and PS39 of Staten Island. The Center's Service Learning program engaged renowned NY sidewalk artist, "Hani," to lead a collaboration with Staten Island students adversely affected by Sandy. 12 narrative paintings will be displayed before moving to City Hall for the 1st anniversary.

- **Enjoy** an evening of light refreshments, music, artwork.
- **Hear** keynote talks by:
 - Tom O'Rourke**, Distinguished Professor of Cornell University, on the new norm for natural disasters and emergency response.
 - Cecil Scheib**, Director of Advocacy of Urban Green Council, on NYC Building Resiliency Task Force findings and legislative actions post-Sandy.
- **Network** with NYC engineers, agency representatives, educators and artists.
- **Receive** complimentary copy of the **GEER** Sandy report.
- **Learn** about **EERI** and what it can do for our community.



OUTREACH PARTNERS

ACEC New York

ASCE METROPOLITAN SECTION

MCEER EARTHQUAKE ENGINEERING TO EXTREME EVENTS

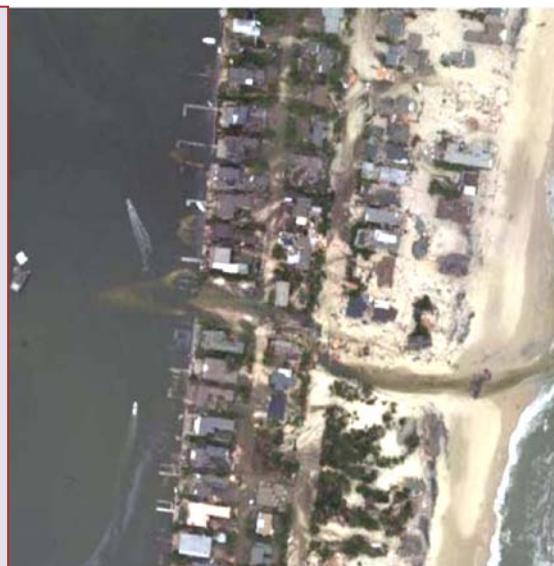
SFA STRUCTURAL ENGINEERS ASSOCIATION NEW YORK

URBAN GREEN

US GREEN BUILDING COUNCIL CHAPTER

IN COLLABORATION WITH

THE CENTER for EDUCATIONAL ENRICHMENT of the **GATEWAY SCHOOL**



EARTHQUAKE ENGINEERING
RESEARCH INSTITUTE
New York – Northeast Chapter
Dedicated to reducing earthquake risk

Thursday October 24th, 6 – 8 PM

The General Society Library
of Mechanics & Tradesmen

20 West 44th Street, New York, NY

